



Installation & Exhibition Space

Gold Award

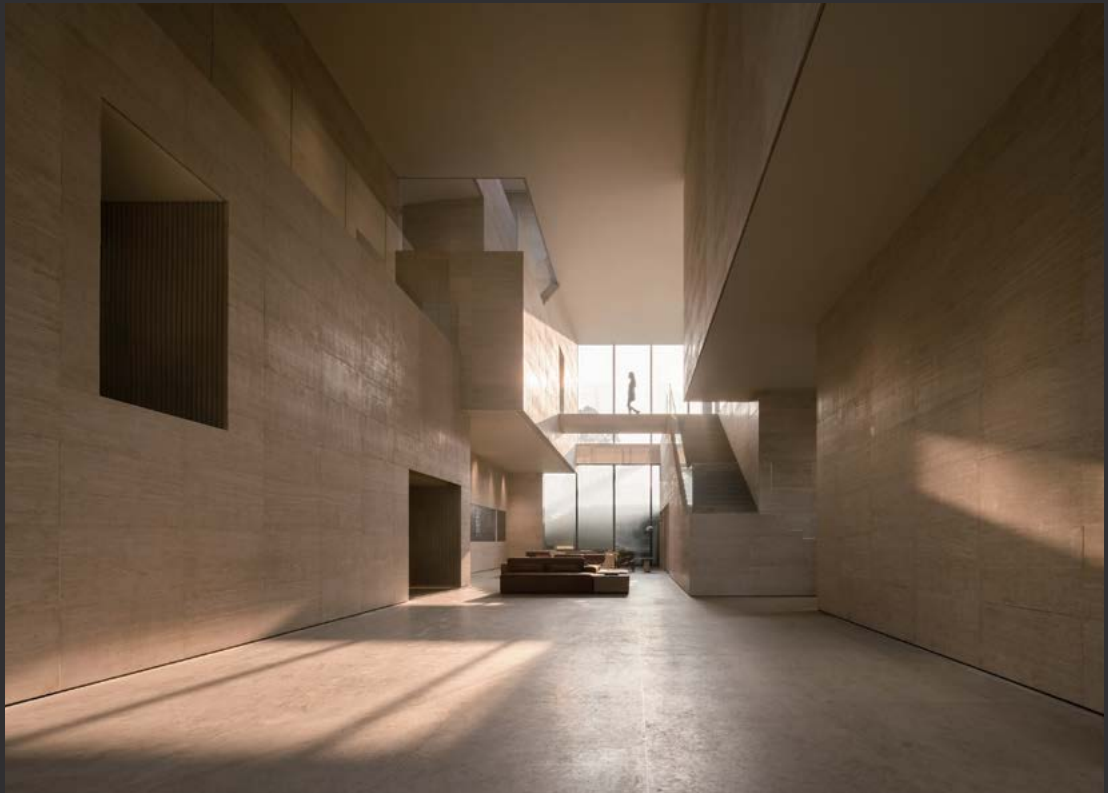
YANGTZE OPUS WUHAN ART MUSEUM

Company Name:
Waterfrom Design Co., Ltd

Project Designer:
Nic Lee, Elvin Ge, Richard Lin, Jen Chen, Vivi Yeh
李智翔、葛祝緯、林其緯、陳蓉臻、葉子葳

Project Location:
China

Site Area:
14,424 sq. ft.



Lifen in Wuhan resembles lane in Beijing and it is the essential cultural symbol in the city. The journal depicts the common people's lives, mixed culture in the settlement, as well as the rise and fall of the population in the places. It shows the mutual prosperity of building and life.

At Wuhan beach with the combination of the present and the past and western and eastern culture, by modern language, Designer reconstructed Lifen. Through horizontal extension of traditional compound houses and vertical characteristic of western building, it analyzed and reorganized vertical and horizontal dimensions and reconstructed the modern space in the lanes.



Installation & Exhibition Space

Excellence

YUNG ZING TUNG COPPER CULTURE GALLERY

Company Name:
SALONE DEL SALON

Project Designers:
Chief designer: Salone;
Design team: Zheng Weibang, Li Lingfeng

Project Location:
China

Site Area:
5,064 sq. ft.

Based upon Yung Zing Tung's core branding, it incorporates product demonstration, culture impression and brand image. With its vast openness and extreme simplicity, subjects on display grasp your attention at the first glance. Conformity and individuality interact with each other with harmony.



Excellence

TIMES BLOSSOM SALES CENTER

Company Name:
C&C DESIGN CO., LTD.

Project Designer:
彭征、丁淇、楊亞會

Project Location:
China

Site Area:
12,917 sq. ft.



Located in Jiangmen, Guangdong, China, Times Blossom Sales Center has superior geographical conditions, which is radiated by the Guangdong-Hong Kong-Macao Greater Bay Area (abbr. GBA) economy, and with good transportation and fast links to various industrial parks. By using the irregular horizontal texture presented by rammed earth paint, the appearance has a unique and poetic material texture, while the space has a primitive texture, which is awakening people's deepest complex to the land. People walk and shuttle in the space, as if far away from the noisy city, and obtain rare tranquility and precipitation.



Installation & Exhibition Space

Excellence

GUANGZHOU AIRPORT SUNAC CENTER EXHIBITION HALL

Company Name:
C&C DESIGN CO., LTD.

Project Designers:
彭征、謝澤坤、謝紫山、鄭瑾萱

Project Location:
China

Site Area:
44,067 sq. ft.



It is an airport TOD project integrating business, office, exhibition and government services. The design takes "Ark" as the metaphor to create the urban planning exhibition hall and theme office area of "The Aviation", which means the urban development centered on the port economy, and thus sets off for a new voyage. The urban planning exhibition hall are inspired by the "City of the Future", to lead the people in the continuous space feeling about the macro experience of ideal future. In addition to the function of urban planning exhibition hall, the project also undertakes the functions of office, roadshow hall and sales center negotiation. The design takes cyberpunk as the way of spatial expression, creating a sense of science fiction space.

Excellence

MEANING OF THE USELESS - COATING SHOWROOM

Company Name:
PADSTUDIO

Project Designers:
馬學鑫、馬宏鋒

Project Location:
China

Site Area:
2,314 sq. ft.



The exhibition hall space is mainly divided into a reception area, a meeting area and an exhibition area. The exhibition area is composed of three square boxes, which are divided into different exhibition spaces. The staggered movement of the box, the different degrees of enclosure of the walls, and the staggered migratory movement lines run through the entire space, creating an exploratory movement line for visitors and an interesting space wandering experience. The space is not a traditional material exhibition hall, which does not directly display and display products, but more like an art space. The product is not only the material itself that constitutes the space, but also the artwork used for exhibition.



Installation & Exhibition Space

Excellence

BRICKLAYING

Company Name:
Senjin Interior Design Co. Ltd

Project Designer:
設計師: 王俊宏;
設計團隊: 黎榮亮、王高進、黃觀武、
李冠豪、茹榮東、胡小月、高子燦

Project Location:
China

Site Area:
2,400 sq. ft.



Home is the layering and collection of life. Much like bricklaying, each brick constructs the home like the footsteps taken on the racetrack of life, taking you closer to realizing your dreams, brick by brick, step by step towards the apex. It is like being on the racetrack drifting at full speed, winning the race, and being rewarded with the most stunning view to enjoy for the rest of your life.

